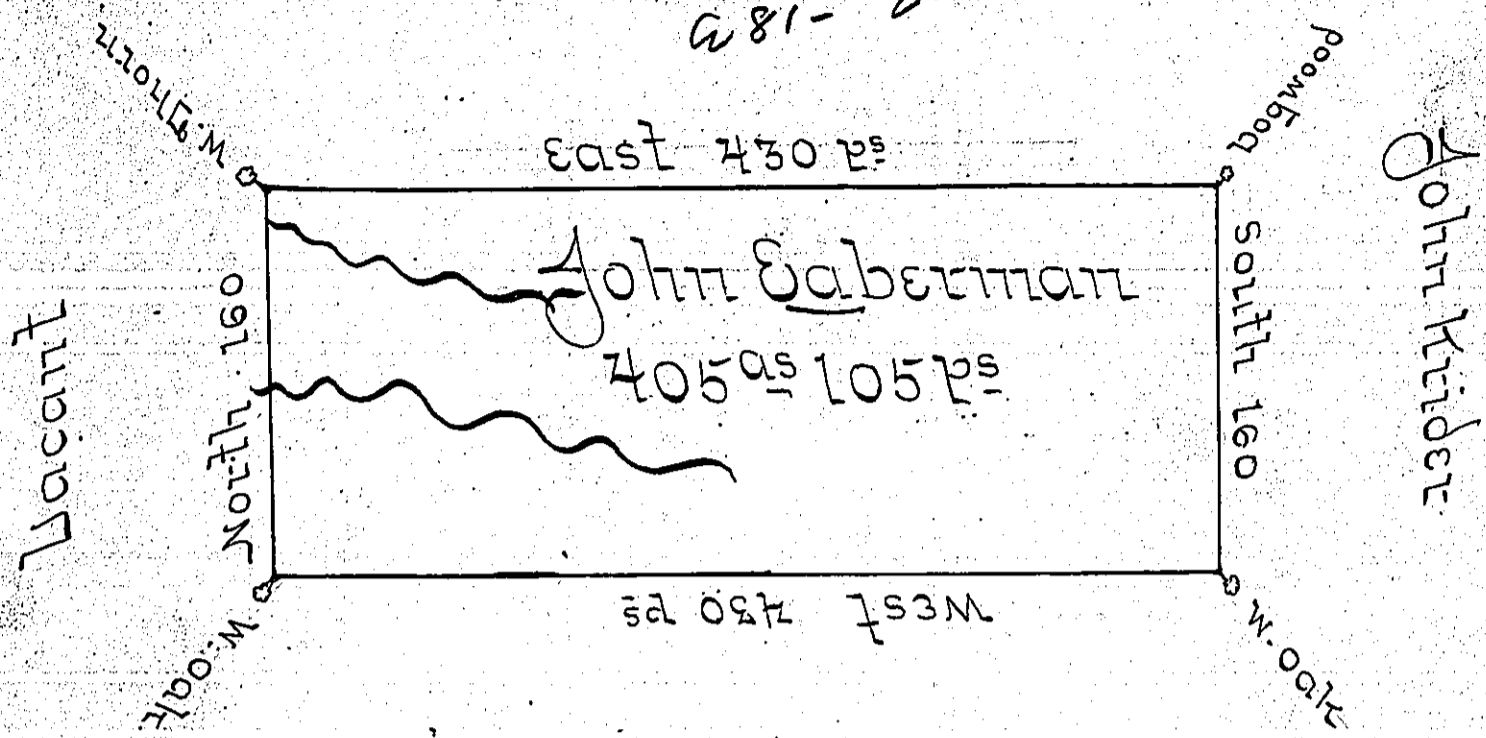


John Shank

681 - 25'



John Hilber

Situated on the Waters of Two Lick Creek in Wheatfield Township Westmoreland County Containing 405 Acres & 105 Perches and allowance for Roads &c. Surveyed for John Eberman the 29<sup>th</sup> day of Nov<sup>r</sup> 1794 on Warrant dated the 3<sup>d</sup> day of May 1793

James Ross US

To Daniel Brodhead Esq<sup>r</sup> Esq.

IN TESTIMONY that the above is a copy of the original remaining on file in the Department of Internal Affairs of Pennsylvania, made conformably to an Act of Assembly approved the 16th day of February, 1833, I have hereunto set my Hand and caused the Seal of said Department to be affixed at Harrisburg, this SEVENTH day of JANUARY 1902.

*James W. Pitta*  
Secretary of Internal Affairs